



**OFFICE OF THE COMMISSIONER  
GENERAL FOR REFUGEES AND  
STATELESS PERSONS**

**ASYLUM STATISTICS**  
**November 2011**

Publisher: Office of the Commissioner General for Refugees and Stateless Persons  
Communication – Information – Press  
[cgra.info@ibz.fgov.be](mailto:cgra.info@ibz.fgov.be)

Contact: Tine Van Valckenborgh – [tine.vanvalckenborgh@ibz.fgov.be](mailto:tine.vanvalckenborgh@ibz.fgov.be) – (+32) 2 205 50 56

Date: 05/12/2011

**.be**

## Table

<b>I. Asylum figures in 2011 .....</b>	<b>2</b>
1. Annually	
2. In November	
<b>II. Asylum applications in Belgium .....</b>	<b>3</b>
1. Number of asylum applications (first applications + multiple applications) .....	3
a. Applications per month (2006-2011)	
b. Applications per year (from 1990-2011)	
c. Top 10 of countries of origin in November 2011	
d. Top 10 of countries of origin in 2011	
e. Asylum applications – male/female ration in 2007-2011	
f. Asylum applications in 2008, 2009, 2010 and 2011 according to nationality	
2. First asylum applications .....	6
a. First applications per month (2006-2011)	
b. First applications per year (2006-2011)	
3. Multiple asylum applications .....	7
a. Multiple applications per month (2006-2011)	
b. Multiple applications per year (2006-2011)	
c. Top 10 of countries of origin for multiple applications in November 2011	
d. Top 10 of countries of origin for multiple applications in 2011	
4. Unaccompanied foreign minors .....	9
a. Applications from unaccompanied minors per month (2006-2011)	
b. Applications from unaccompanied minors per year (2006-2011)	
c. Top 5 of countries of origin of unaccompanied minors in November 2011	
d. Top 5 of countries of origin of unaccompanied minors in 2011	
e. Male/female ratio of unaccompanied foreign minor applicants in 2007-2011	
<b>III. Asylum decisions in 2011 .....</b>	<b>11</b>
1. Decisions by the Immigration Department	
2. Decisions by the CGRS	
a. Number of decisions	
b. Recognition of refugee status, per nationality	
c. Granting subsidiary protection status, per nationality	
<b>IV. Evolution of the caseload at the CGRS .....</b>	<b>14</b>

## I. Asylum figures in 2011

(source: Immigration department)

### 1. Annually

Asylum applications	Number of files	% of asylum applications
Number of asylum applications	23.044	
First asylum applications	18.500	80,28%
Multiple asylum applications	4.544	19,72%
Unaccompanied foreign minors	1.561	6,77%
Decisions	Number of decisions	% of decisions
CGRS decisions	15.139	
Recognition of refugee status	2.590	17,11%
Subsidiary Protection (SP)	961	6,35%
Refusal to grant refugee status and SP	10.946	72,30%
Other	642	4,24%
<b>Caseload at the CGRA</b>	<b>13.595</b>	

### 2. November 2011

Asylum applications	Number of files	% of asylum applications
Number of asylum applications	2.318	
First asylum applications	1.868	80,59%
Multiple asylum applications	450	19,41%
Unaccompanied foreign minors	149	6,43%
Decisions	Number of decisions	% of decisions
CGRS decisions	1.520	
Recognition of refugee status	228	15,00%
Subsidiary Protection (SP)	139	9,14%
Refusal to grant refugee status and SP	1.059	69,67%
Other	94	6,18%
<b>Caseload at the CGRA</b>	<b>13.595</b>	

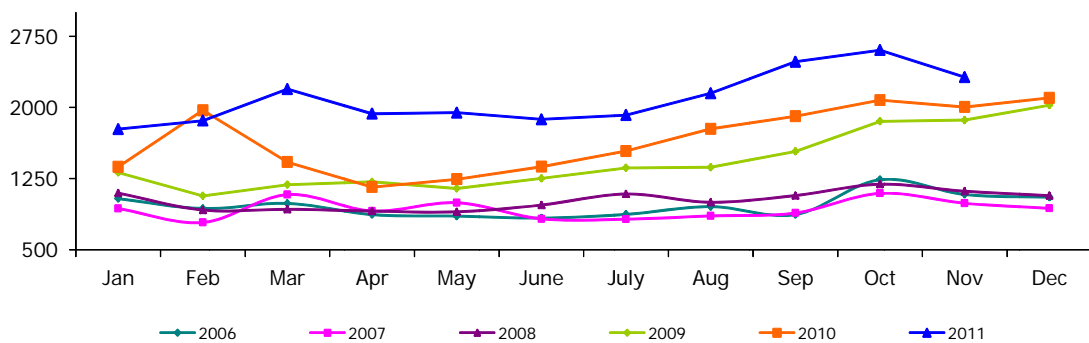
## II. Asylum applications in Belgium

(source: Immigration Department unless otherwise stated)

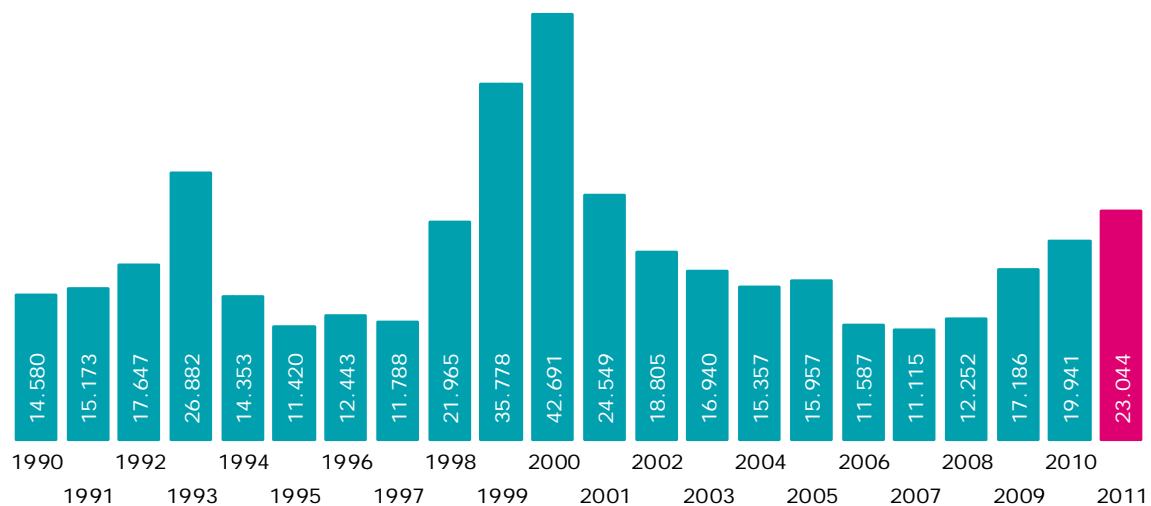
### 1. Number of asylum applications (first applications + multiple applications)

#### a. Applications per month (2006-2011)

	2006	2007	2008	2009	2010	2011	+/- in % 2011 vs 2010	+/- in % vs last month
January	1.038	934	1.097	1.314	1.373	1.771	28,99%	-15,67%
February	934	787	918	1.068	1.968	1.860	-5,49%	5,03%
March	988	1.081	926	1.185	1.424	2.193	54,00%	17,90%
April	870	908	907	1.215	1.160	1.933	66,64%	-11,86%
May	854	995	899	1.145	1.243	1.944	56,40%	0,57%
June	834	825	971	1.251	1.375	1.873	36,22%	-3,65%
July	872	822	1.087	1.363	1.539	1.919	24,69%	2,46%
August	954	856	1.000	1.368	1.773	2.149	21,21%	11,99%
September	870	887	1.071	1.535	1.906	2.480	30,12%	15,40%
October	1.238	1.094	1.190	1.853	2.076	2.604	25,43%	5,00%
November	1.082	990	1.116	1.866	2.004	2.318	15,67%	-10,98%
December	1.053	936	1.070	2.023	2.100			
<b>Total</b>	<b>11.587</b>	<b>11.115</b>	<b>12.252</b>	<b>17.186</b>	<b>19.941</b>	<b>23.044</b>		



#### b. Applications per year (from 1990 until the end of November 2011)



**c. Top 10 of countries of origin in November 2011**

Country of origin	Number	%
1 Guinea	238	10,3%
2 Afghanistan	207	8,9%
3 Iraq	192	8,3%
4 Russia	170	7,3%
5 Congo RD	116	5,0%
6 Albania	96	4,1%
7 Pakistan	88	3,8%
8 Kosovo	68	2,9%
9 Serbia	67	2,9%
10 Nepal	64	2,8%
Other countries	1.012	43,7%
<b>Total November 2011</b>	<b>2.318</b>	<b>100%</b>
<b>Percentage top 10</b>	<b>56,3%</b>	

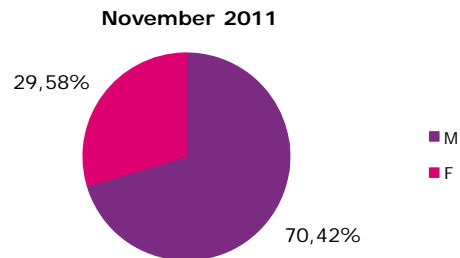
**d. Top 10 of countries of origin in 2011**

Country of origin	Number	%
1 Afghanistan	2.562	11,1%
2 Iraq	1.930	8,4%
3 Guinea	1.798	7,8%
4 Russia	1.411	6,1%
5 Kosovo	1.339	5,8%
6 Serbia	1.027	4,5%
7 Congo RD	897	3,9%
8 Pakistan	834	3,6%
9 Macedonia	770	3,3%
10 Albania	758	3,3%
Other countries	9.718	42,2%
<b>Total 2011</b>	<b>23.044</b>	<b>100%</b>
<b>Percentage top 10</b>	<b>57,8%</b>	

**e. Asylum applications : male/female ratio of applicants from 2007 until 2011**

(source: CGRS)

	Male	Female
2007	67,14%	32,86%
2008	69,27%	30,73%
2009	69,17%	30,83%
2010	68,22%	31,78%
<b>2011</b>	<b>69,52%</b>	<b>30,48%</b>



**f. Applications in 2008, 2009, 2010 and 2011 according to nationality**  
 (in color and bold : top 10 in 2011)

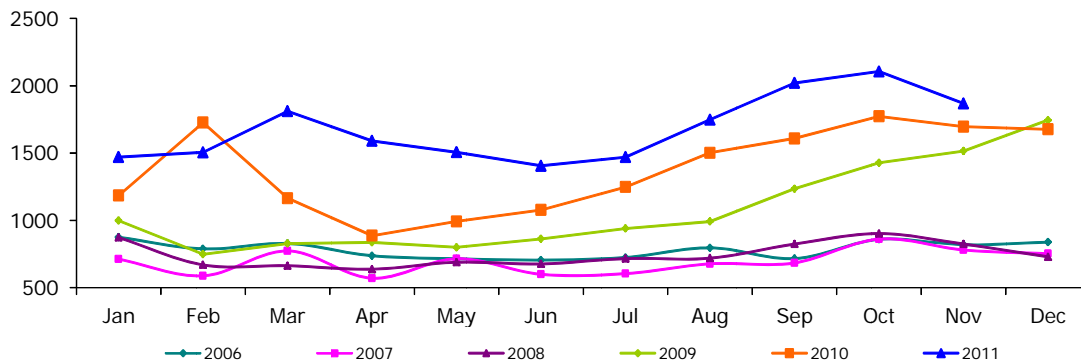
Country of origin	2008	2009	2010	2011
<b>Afghanistan</b>	<b>879</b>	<b>1.659</b>	<b>1.411</b>	<b>2.562</b>
<b>Albania</b>	<b>172</b>	<b>256</b>	<b>204</b>	<b>758</b>
Algeria	206	275	287	274
Angola	133	142	153	145
Argentina	0	0	8	1
Armenia	461	1.099	986	636
Azerbaijan	53	54	72	102
Bangladesh	79	75	177	406
Belorussia	58	40	53	77
Benin	16	50	56	53
Bhutan	34	24	19	13
Bolivia	0	0	0	1
Bosnia-Herzegovina	71	90	106	274
Brasil	1	2	3	1
Bulgaria	46	101	79	65
Burkina-Faso	32	52	69	86
Burundi	106	120	132	156
Cameroon	367	302	357	477
Canada	1	0	0	0
Cape Verde	1	0	0	0
Central African Rep.	7	6	4	3
Chad	16	16	21	10
Chili	0	0	0	4
China	189	329	235	342
Colombia	4	8	13	3
<b>Congo RD</b>	<b>579</b>	<b>670</b>	<b>786</b>	<b>897</b>
Congo RP	30	14	22	22
Croatia	3	16	15	8
Cuba	2	3	2	5
Czech Rep.	45	48	21	22
Djibouti	26	39	31	52
Dominican Rep.	1	9	1	4
Ecuador	2	0	0	0
Egypt	24	29	29	96
Equatorial Guinea	0	3	3	1
Eritrea	35	69	110	70
Estonia	0	0	1	0
Ethiopia	71	89	72	44
Fidji	0	0	0	1
France	0	0	0	6
Gabon	4	5	10	3
Gambia	35	41	57	60
Georgia	222	327	323	289
Germany	0	2	0	0
Ghana	20	29	65	97
Greece	0	0	1	0
Guatemala	0	7	1	1
<b>Guinea</b>	<b>661</b>	<b>1.052</b>	<b>1.398</b>	<b>1.930</b>
Guinea-Bissau	1	3	5	10
Guyana	0	1	0	0
Haiti	1	1	9	6
Hungary	16	143	36	7
India	84	123	151	164
Indonesia	1	3	0	0
Iran	614	732	386	385
<b>Iraq</b>	<b>1.070</b>	<b>1.386</b>	<b>1.769</b>	<b>1.798</b>
Israel	18	8	7	9
Italy	0	0	1	2
Ivory Coast	91	88	173	345
Jamaica	4	1	1	0
Jordania	21	15	10	26
Kampuchea	0	1	0	0
Kazakhstan	16	44	75	103
Kenia	55	42	65	50
Kirghizistan	14	19	117	87
<b>Kosovo</b>	<b>478</b>	<b>1.539</b>	<b>1.848</b>	<b>1.339</b>
Kuwait	1	0	1	0
Latvia	5	3	2	0
Libanon	85	95	70	77
Liberia	23	27	27	39

Country of origin	2008	2009	2010	2011
Libya	15	19	19	55
Lithuania	1	5	1	3
<b>Macedonia</b>	<b>122</b>	<b>201</b>	<b>1.082</b>	<b>770</b>
Madagascar	1	3	2	6
Malawi	0	0	0	1
Malaysia	0	2	0	0
Mali	5	11	25	29
Malta	0	0	2	0
Mauretania	128	187	206	171
Mauritius	0	1	3	8
Mexico	0	1	1	1
Moldova	14	29	14	7
Mongolia	43	85	61	63
Montenegro	7	12	14	30
Morocco	36	53	46	83
Mozambique	0	0	0	1
Myanmar	9	8	14	7
Nepal	39	65	203	341
Netherlands	0	2	1	0
Nicaragua	0	0	0	1
Niger	57	71	78	84
Nigeria	59	101	138	148
North Corea	2	4	16	66
<b>Pakistan</b>	<b>150</b>	<b>233</b>	<b>340</b>	<b>834</b>
Palestina	5	9	37	47
Panama	0	2	0	0
Peru	0	1	0	0
Philippines	0	1	0	1
Poland	2	6	0	0
Romania	43	98	56	68
<b>Russia</b>	<b>1.620</b>	<b>1.605</b>	<b>1.526</b>	<b>1.411</b>
Rwanda	273	308	337	414
Salvador	0	0	0	16
Saudi Arabia	0	0	1	1
Senegal	50	113	252	353
<b>Serbia</b>	<b>572</b>	<b>514</b>	<b>1.233</b>	<b>1.027</b>
Sierra Leone	42	45	65	68
Slovakia	239	261	53	35
Slovenia	0	1	0	0
Somalia	163	216	294	425
South Africa	1	1	0	1
South Corea	0	0	0	1
Spain	0	3	1	2
Sri Lanka	148	216	140	158
Sudan	62	89	92	71
Surinam	0	4	5	8
Syria	281	347	388	496
Tadzhikistan	1	5	7	7
Tanzania	49	90	89	139
Thailand	0	1	1	0
Timor-Leste	2	0	0	0
Togo	171	130	246	211
Tunisia	6	21	20	98
Turkey	284	259	277	367
Turkmenistan	0	5	3	3
Uganda	13	23	15	23
Ukraine	61	33	62	48
United Arabic Emirates	0	2	0	0
USA	0	0	3	6
Uzbekistan	15	14	20	19
Venezuela	1	0	2	5
Vietnam	9	10	18	4
Yemen	7	8	11	13
Zimbabwe	8	4	3	4
Others	14	15	10	16
Indefinite	126	199	254	264
Stateless Persons	6	7	7	1
Refugees	0	1	1	0
<b>Total</b>	<b>12.252</b>	<b>17.186</b>	<b>19.941</b>	<b>23.044</b>

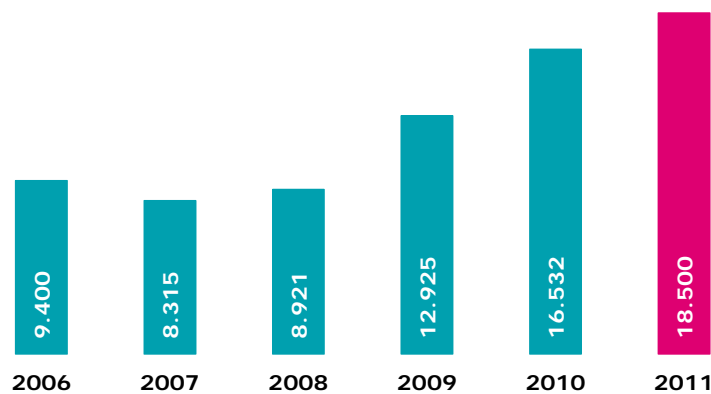
## 2. First asylum applications

### a. First applications per month (2006-2011)

	2006	2007	2008	2009	2010	2011	+/- in % 2011 vs 2010	+/- en % vs last month
January	875	712	873	998	1.184	1.470	24,16%	-12,29%
February	788	588	669	749	1.726	1.505	-12,80%	2,38%
March	828	773	663	828	1.164	1.811	55,58%	20,33%
April	737	570	637	836	886	1.590	79,46%	-12,20%
May	715	715	689	799	992	1.506	51,81%	-5,28%
June	705	599	676	862	1.077	1.405	30,45%	-6,71%
July	724	604	716	940	1.248	1.470	17,79%	4,63%
August	796	677	719	991	1.502	1.748	16,38%	18,91%
September	716	684	824	1.235	1.608	2.021	25,68%	15,62%
October	859	861	902	1.428	1.773	2.106	18,78%	4,21%
November	819	780	824	1.515	1.696	1.868	10,14%	-11,30%
December	838	752	729	1.744	1.676			
<b>Total</b>	<b>9.400</b>	<b>8.315</b>	<b>8.921</b>	<b>12.925</b>	<b>16.532</b>	<b>18.500</b>		



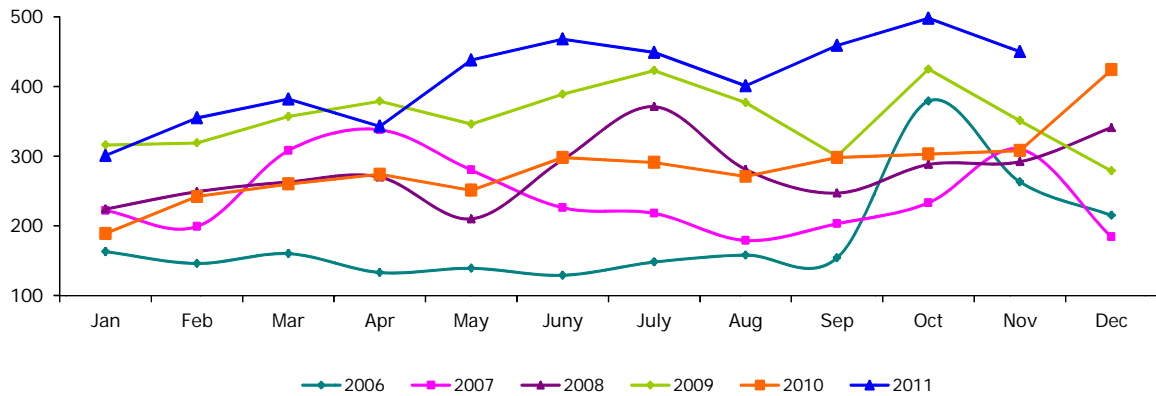
### b. First applications per year (from 2006 until the end of November 2011)



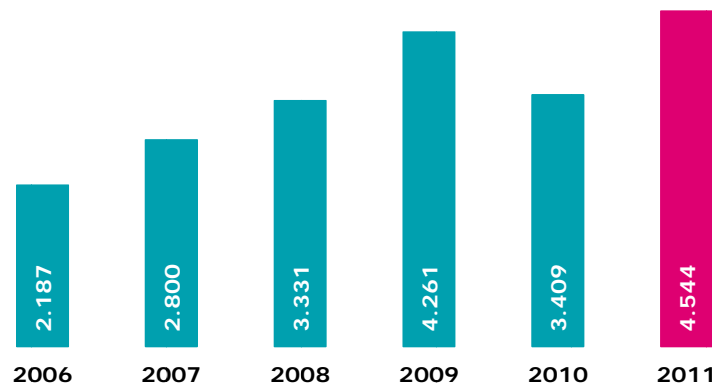
### 3. Multiple asylum applications

#### a. Multiple applications per month (2006-2011)

	2006	2007	2008	2009	2010	2011	+/- in % 2011 vs 2010	+/- in % vs last month
January	163	222	224	316	189	301	59,26%	-29,01%
February	146	199	249	319	242	355	46,69%	17,94%
March	160	308	263	357	260	382	46,92%	7,61%
April	133	338	270	379	274	343	25,18%	-10,21%
May	139	280	210	346	251	438	74,50%	27,70%
June	129	226	295	389	298	468	57,05%	6,85%
July	148	218	371	423	291	449	54,30%	-4,06%
August	158	179	281	377	271	401	47,97%	-10,69%
September	154	203	247	300	298	459	54,03%	14,46%
October	379	233	288	425	303	498	64,36%	8,50%
November	263	210	292	351	308	450	46,10%	-9,64%
December	215	184	341	279	424			
<b>Total</b>	<b>2.187</b>	<b>2.800</b>	<b>3.331</b>	<b>4.261</b>	<b>3.409</b>	<b>4.544</b>		



#### b. Multiple applications per year (from 2006 until the end of November 2011)



c. Top 10 of countries of origin for multiple applications in November 2011

Country of origin	Number	%
1 Russia	63	14,0%
2 Guinea	53	11,8%
3 Afghanistan	35	7,8%
4 Kosovo	32	7,1%
5 Armenia	30	6,7%
6 Rwanda	27	6,0%
7 Iraq	18	4,0%
Serbia	18	4,0%
8 Macedonia	17	3,8%
9 Senegal	11	2,4%
10 Iran	10	2,2%
Other countries	136	30,2%
<b>Total November 2011</b>	<b>450</b>	<b>100%</b>
<b>Percentage top 10</b>	<b>69,8%</b>	

d. Top 10 of countries of origin for multiple applications in 2011

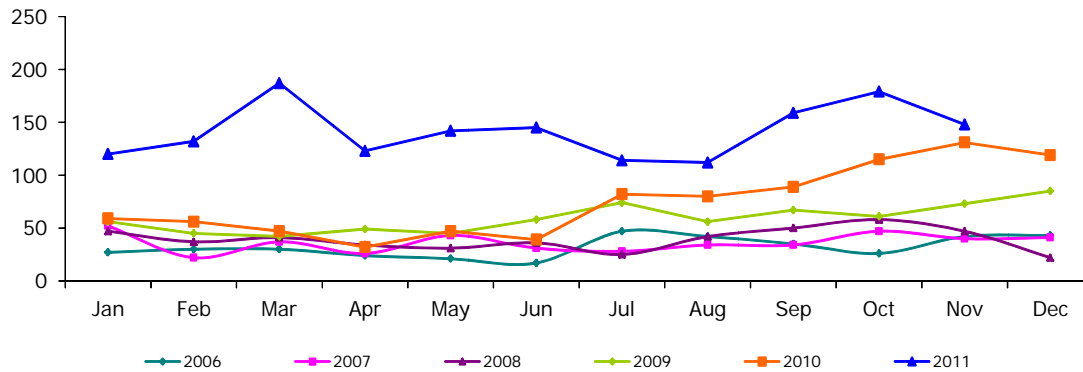
Country of origin	Number	%
1 Russia	480	10,6%
2 Kosovo	397	8,7%
3 Guinea	362	8,0%
4 Afghanistan	338	7,4%
5 Armenia	262	5,8%
6 Serbia	245	5,4%
7 Iraq	184	4,0%
8 Macedonia	157	3,5%
9 Rwanda	134	2,9%
Syria	134	2,9%
10 Iran	115	2,5%
Other countries	1.736	38,2%
<b>Total 2011</b>	<b>4.544</b>	<b>100%</b>
<b>Percentage top 10</b>	<b>61,8%</b>	

#### 4. Unaccompanied foreign minors

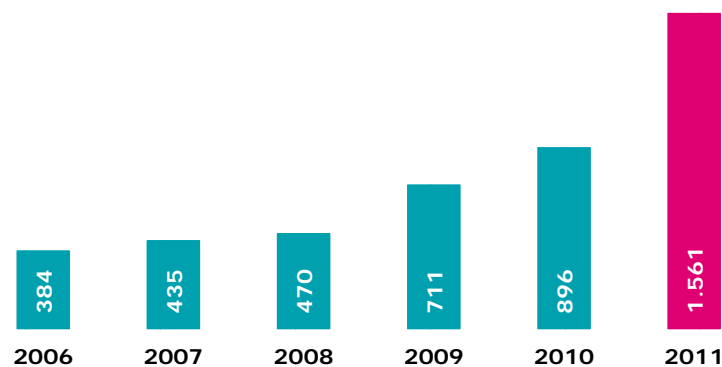
The figures given by Immigration department are liable to change according to the results of the bone age tests carried out to ascertain whether an alleged minor is younger than 18.

##### a. Applications from unaccompanied foreign minors per month (2006-2011)

	2006	2007	2008	2009	2010	2011	+/- in % 2011 vs 2010	+/- in % vs last month
January	27	52	47	56	59	120	103,39%	0,84%
February	30	22	37	45	56	132	135,71%	10,00%
March	30	37	41	42	47	187	297,87%	41,67%
April	24	26	34	49	32	123	284,38%	-34,22%
May	21	43	31	45	47	142	202,13%	15,45%
June	17	31	36	58	39	145	271,79%	2,11%
July	47	28	25	74	82	114	39,02%	-21,38%
August	42	34	42	56	80	112	40,00%	-1,75%
September	35	34	50	67	89	159	78,65%	41,96%
October	26	47	58	61	115	179	55,65%	12,58%
November	42	40	47	73	131	148	12,98%	-17,32%
December	43	41	22	85	119			
<b>Total</b>	<b>384</b>	<b>435</b>	<b>470</b>	<b>711</b>	<b>896</b>	<b>1.561</b>		



##### b. Applications from unaccompanied foreign minors per year (from 2006 until the end of November 2011)



c. Top 5 of countries of origin of unaccompanied minors in November 2011

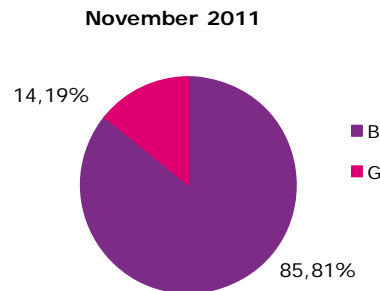
Country of origin	Number	%
1 Afghanistan	55	37,2%
2 Guinea	28	18,9%
3 Bangladesh	9	6,1%
4 Congo DR	7	4,7%
5 Cameroon	6	4,1%
Other countries	43	29,1%
<b>Total November 2011</b>	<b>148</b>	<b>100%</b>
<b>Percentage top 5</b>	<b>70,9%</b>	

d. Top 5 of countries of origin of unaccompanied minors in 2011

Country of origin	Number	%
1 Afghanistan	730	46,8%
2 Guinea	270	17,3%
3 Congo RD	49	3,1%
4 Iraq	46	2,9%
5 Somalia	33	2,1%
Bangladesh	33	2,1%
Pakistan	33	2,1%
Other countries	367	23,5%
<b>Total 2011</b>	<b>1.561</b>	<b>100%</b>
<b>Percentage top 5</b>	<b>76,5%</b>	

e. Male/female ratio of unaccompanied minor applicants

	Boys	Girls
2007	68,40%	31,60%
2008	71,40%	28,60%
2009	77,98%	22,02%
2010	72,88%	27,12%
<b>2011</b>	<b>81,29%</b>	<b>18,71%</b>



### III. Asylum decisions in 2011

(source: CGRS)

#### 1. Decisions by the Immigration Department

	Jan-Oct	November	Total
Transfer of files to CGI	16.386	1.402	17.788
25/26 quater (Dublin)	1.562	119	1.681
13 quater	1.675	158	1.833
Renunciation, ...	1.351	13	1.364
<b>Total</b>	<b>20.974</b>	<b>1.692</b>	<b>22.666</b>

The Immigration Department decides on certain kinds of applications: applications falling under the Dublin Regulation, multiple applications, renunciations etc. Applications not who de not fall within to these categories are transferred to the CGRS.

#### 2. Decisions by the CGRS

##### a. Number of decisions

	Jan	Feb	March	April	May	June	July	Aug	Sept	Oct	Nov	Total	
Recognition of refugee status	167	234	220	202	248	208	188	253	383	259	228	2.590	
Granting of subsidiary protection	53	62	75	84	66	58	76	111	104	133	139	961	
Refusal to grant refugee status and subsidiary protection	598	745	911	890	1.119	906	939	908	1.099	1.069	975	10.159	
Refusal to take an asylum application into consideration (EU nationals)	3	10	16	9	7	5	14	17	6	12	13	112	
Technical refusal	44	77	91	75	68	79	52	65	95	57	84	787	
Exclusion from refugee status and from subsidiary protection	1	2	1		3		3	1	4	3	3	21	
Exclusion from refugee status and refusal to grant subsidiary protection			1	1	3	1					3	2	11
Refusal to grant refugee status and exclusion form subsidiary protection			2	4					3	2	1	1	13
Abolition of refugee status and/or subsidiary protection							2	4			1		7
Withdrawal of refugee status and/or subsidiary protection	6	2	2	2	1	4	2	4	3			2	28
Renunciation + closing of the case + departure IOM	19	40	23	24	30	30	27	29	44	37	46	349	
Application which does not proceed to judgment: regularization under art 55	4	5	9	3	2	5	5	4	9	6	23	75	
Application which does not proceed to judgment: (naturalization, death, administrative reasons)	3	2	3	1	2	1	1	1	2	6	4	26	
<b>Total</b>	<b>898</b>	<b>1.182</b>	<b>1.356</b>	<b>1.293</b>	<b>1.547</b>	<b>1.298</b>	<b>1.311</b>	<b>1.396</b>	<b>1.751</b>	<b>1.587</b>	<b>1.520</b>	<b>15.139</b>	

**b. Recognition of refugee status, per nationality**

(in color and bold : countries in the top 10 of asylum applications in 2011)

Country of origin	Jan	Feb	Mar	April	May	June	July	Aug	Sept	Oct	Nov	Total
<b>Afghanistan</b>	<b>20</b>	<b>17</b>	<b>18</b>	<b>12</b>	<b>21</b>	<b>13</b>	<b>13</b>	<b>20</b>	<b>34</b>	<b>36</b>	<b>42</b>	<b>246</b>
<b>Albania</b>		<b>3</b>		<b>4</b>	<b>2</b>	<b>3</b>		<b>4</b>	<b>4</b>		<b>1</b>	<b>21</b>
Algeria		1			1				1	2		5
Angola	1			1	1		2		1			6
Armenia	1						2		1			4
Azerbaijan		2							1			3
Bangladesh	1											1
Belorussia	1			1								2
Benin					1					1	2	4
Burkina Faso					1				1		1	3
Burundi	1	2	3	3	1	2	4	6	6	2	3	33
Cameroon	1	14	10	5	8	8	6	6	9	3	4	74
Chad		1		1	2							4
China	14	7	19	18	9	10	2		27	18	16	140
Colombia	1		3		1						1	6
Congo Brazzaville						1						1
<b>Congo RD</b>	<b>7</b>	<b>10</b>	<b>2</b>	<b>1</b>	<b>4</b>	<b>4</b>	<b>6</b>	<b>6</b>	<b>16</b>	<b>5</b>	<b>5</b>	<b>66</b>
Djibouti		2		1	1	1	4	1	2	1		13
Egypt					1		1	1			1	4
Eritrea	1	1		1	4	3	15	3	1		1	30
Ethiopia								1	1	1		3
Gabon		1	1		3						1	6
Gambia	1		1			1	1	2		1		7
Ghana					1				1			2
<b>Guinea</b>	<b>27</b>	<b>47</b>	<b>32</b>	<b>31</b>	<b>45</b>	<b>49</b>	<b>30</b>	<b>39</b>	<b>96</b>	<b>61</b>	<b>46</b>	<b>503</b>
Indefinite	6	5	5	3	5	7	4	4	2	4	1	46
India			1									1
Iran	1	3	3	4	9	2	2	1	2	9	5	41
<b>Iraq</b>	<b>27</b>	<b>36</b>	<b>49</b>	<b>35</b>	<b>38</b>	<b>26</b>	<b>24</b>	<b>42</b>	<b>43</b>	<b>37</b>	<b>28</b>	<b>385</b>
Ivory Coast	1			1	1	3			1	2	1	10
Jordania			1						2			3
Kazakhstan						1						1
Kenia		2	2						1	1	2	8
<b>Kosovo</b>	<b>11</b>	<b>13</b>	<b>10</b>	<b>18</b>	<b>9</b>	<b>1</b>	<b>20</b>	<b>21</b>	<b>16</b>	<b>9</b>	<b>6</b>	<b>134</b>
Kuwait	1											1
Libanon	1			2	2	1	1	2				9
Liberia					1				1		1	3
<b>Macedonia</b>		<b>1</b>						<b>2</b>				<b>3</b>
Madagascar						1	1					2
Mali						2			1	1		4
Mauretania		1	2	1	1	2	1	1		4		13
Mauritius					1						2	3
Morocco	1	1							1			3
Myanmar			1	2		1		4	1			9
Niger	2	3	1	6						1		13
Nigeria		1						1				2
North Corea	2	4	3	1	1	3		1	5	1	4	25
<b>Pakistan</b>					<b>1</b>	<b>2</b>	<b>1</b>			<b>1</b>		<b>5</b>
Palestine				1		2		1	1			5
<b>Russia</b>	<b>9</b>	<b>5</b>	<b>9</b>	<b>12</b>	<b>15</b>	<b>16</b>	<b>12</b>	<b>23</b>	<b>42</b>	<b>27</b>	<b>10</b>	<b>180</b>
Rwanda	2	14	11	4	14	7	5	19	10	1	17	104
Senegal	5	6	7	7	10	10	6	15	17	7	7	97
<b>Serbia</b>	<b>4</b>	<b>9</b>	<b>4</b>	<b>4</b>	<b>5</b>	<b>5</b>	<b>5</b>	<b>6</b>	<b>11</b>		<b>2</b>	<b>51</b>
Sierra Leone		4				2						6
Somalia	3	1	6	4	12	10	8	7	8	9	5	73
Sri Lanka	2	4		4	8	4	4	6	4	4	5	45
Sudan			1				3	1				5
Syria	8	4	12	8			1	1	2	2	2	40
Tanzania	2	2	1					3		2	3	13
Togo		2	4		4	2	4	1	1	3	2	23
Turkey	2	4	2	5	3	2		2	9	3	1	33
Turkmenistan		1										1
Uganda				1	1							2
Zimbabwe						1						1
<b>Total</b>	<b>167</b>	<b>234</b>	<b>220</b>	<b>202</b>	<b>248</b>	<b>208</b>	<b>188</b>	<b>253</b>	<b>383</b>	<b>259</b>	<b>228</b>	<b>2.590</b>

**c. Granting of subsidiary protection, per nationality**  
 (in color and bold : countries in the top 10 of asylum applications in 2011)

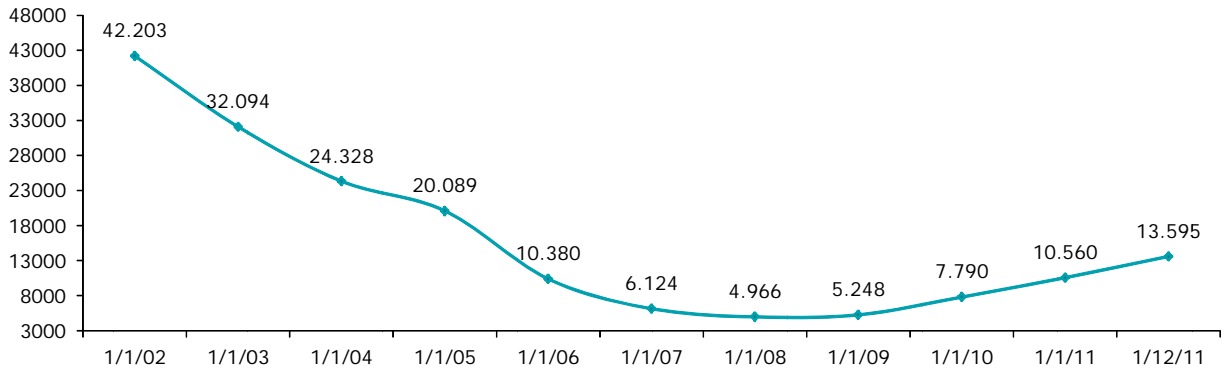
Country of origin	Jan	Feb	Mar	April	May	June	July	Aug	Sept	Oct	Nov	Total
<b>Afghanistan</b>	<b>27</b>	<b>31</b>	<b>22</b>	<b>30</b>	<b>19</b>	<b>19</b>	<b>21</b>	<b>29</b>	<b>32</b>	<b>60</b>	<b>46</b>	<b>336</b>
Angola					1							1
Burundi			1						1	1		3
Cameroon			1				1					2
<b>Congo (RD)</b>	<b>1</b>		<b>2</b>				<b>1</b>		<b>1</b>			<b>5</b>
El Salvador							2				6	8
Erytrea								1		1		2
<b>Guinea</b>	<b>1</b>					<b>1</b>	<b>1</b>	<b>2</b>	<b>2</b>	<b>1</b>		<b>8</b>
Indefinite		4	1			1	3	2		2	4	17
<b>Iraq</b>	<b>21</b>	<b>22</b>	<b>44</b>	<b>53</b>	<b>41</b>	<b>32</b>	<b>41</b>	<b>69</b>	<b>63</b>	<b>62</b>	<b>75</b>	<b>523</b>
Ivory Coast									1			1
<b>Macedonia</b>											<b>2</b>	<b>2</b>
Palestine	1						1	2	2	2		8
<b>Russia</b>								<b>2</b>			<b>1</b>	<b>3</b>
Somalia	2	4	1	1	4	5	5	1		2	2	27
Sudan			1		1			2	2	1	2	9
Tanzania			2									2
Togo								1		1	1	3
Yemen		1										1
<b>Total</b>	<b>53</b>	<b>62</b>	<b>75</b>	<b>84</b>	<b>66</b>	<b>58</b>	<b>76</b>	<b>111</b>	<b>104</b>	<b>133</b>	<b>139</b>	<b>961</b>

#### IV. Evolution of the caseload at the CGRS

(Caseload in assessing asylum applications at the CGRS)

At the end of November 2011, the CGRA had a total caseload of **13,595** dossiers, of which **4,500** dossiers may be considered a normal workload. The backlog as such amounted therefore to **9,095** dossiers.

**Caseload per year**



**Caseload per month in 2010 and January - November 2011**

